

**10 Years
Warranty**

VELCO — a new generation of air supply valve

Unique VELCO supply valve is equipped with a thermostat, fine electrostatic filter and muffler. Inlet valve provides free, but controlled, fresh and purified air into the building. It is especially important to limit heat loss in winter. Suitable for both natural and mechanical ventilation systems.



VELCO F9 class fine filter
not allows dirt from the outside

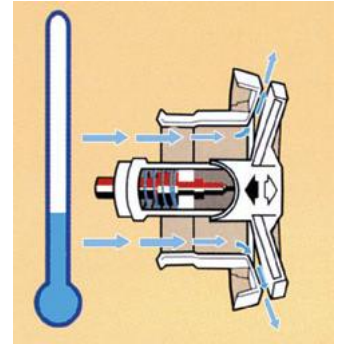


**HOME VENTILATION PROVIDED BY VELCO SUPPLY VALVE WITH
PERMANENT AIR SUPPLY, DELIVERS SIGNIFICANT BENEFITS:**

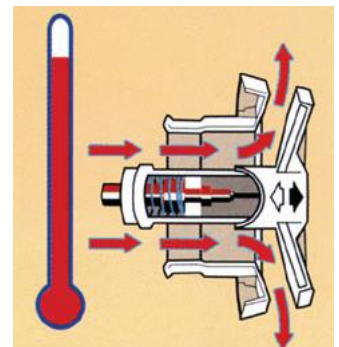
- 1** Simple and cost effective installation
- 2** No problems caused by steam, smoke and carbon dioxide concentration
- 3** Fresh air creates a healthy atmosphere and well-being home for residents

VELCO SUPPLY VALVE ADVANTAGES:

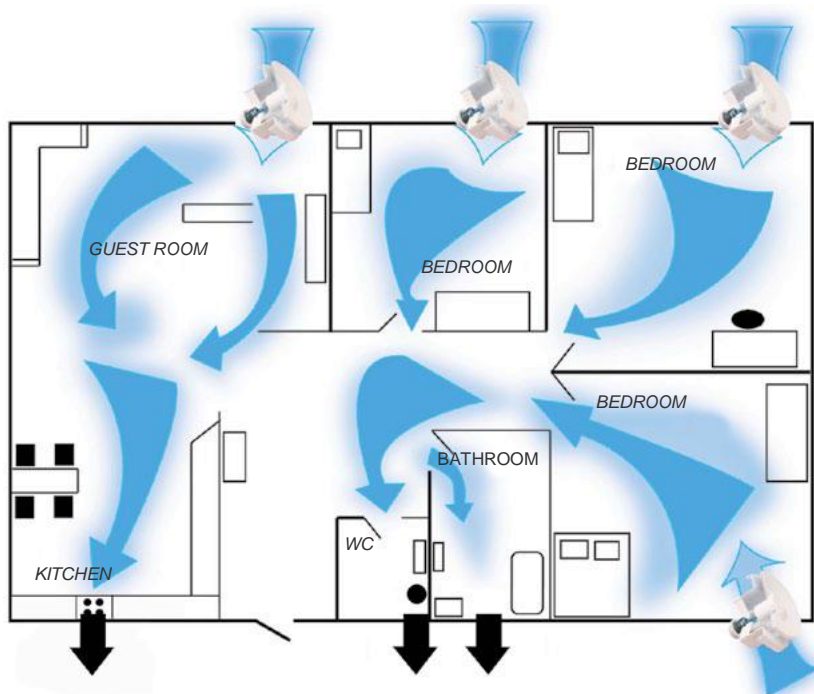
- Open construction ensures the free flow of air.
- Careful filtering (F9 class filter - fine filter)
- Each filter contains fibers with permanent electrostatic charge, which increases the efficiency of the particle suspension;
- Successfully stops the dust and pollen particles (which causes shortness of breath and cough), odor molecules as well as the health of the most dangerous mineral particles (0.0025 mm in size, which are released into the blood);
- Equipped with a built-in silencer *.
- Durable in different atmospheric conditions.
- Ease of use.
- Inlet valve equipped with a thermostat, which automatically changes the air flow depending on the outside temperature.
- The thermostat fully opens the valve at temperatures above + 10 ° C and closes it at temperatures below -5 ° C.
- Simple design allows you to quickly replace the filter (if necessary).
- Easy assembly of both existing and newly built buildings.
- 10-year warranty.
- There is no need for electrical installations.



cold air



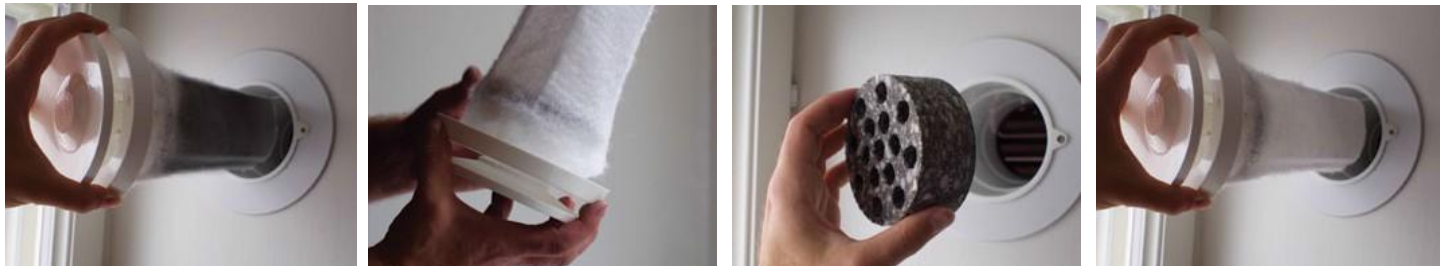
warm air



INSTALLATION RECOMMENDATIONS:

1. One supply valve must be installed on every 20-30 m² area (applies Ø100 mm size) . Supply valve needs to be installed in each room (bedroom, living room). Other rooms (kitchen, toilets, bathrooms and lobby) stale air extracts through vents.
2. The supply valve must be installed no less than 220 cm in height from the floor and maximum by diagonally from the entrance door.

* Available sizes Ø100 mm



1. Remember to replace the air filter at least once a year, when the filter surface gets heavily polluted. The filter is marked with the symbol Filter VS-100th
2. Use the silencer only if necessary (if the wall with a valve is located directly on the street), since the silencer reduces the flow of air.



BASEMENT COOLING:

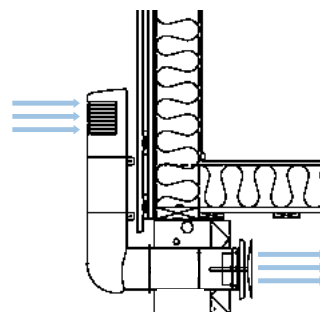
VELCO valve can be used in conjunction with the ventilation outlet Ross (Ø 125 and Ø 160), which provides the building cellar ventilation. Thermoplastic valve is particularly useful auxiliary. Thus, as appropriate (for example, the building is close to the street, but the basement is an additional room, game lounge, laundry facilities) shall be installed with a filter and muffler or without it.



Ross ventilation outlet (Ø 125 and Ø 160)



Velco valve



Basement ventilation

AVAILABLE SIZES Ø:

80 MM, 100 MM, 125 MM AND 160 MM

AVAILABLE COLORS:

The thermostat (inside room):

white, brown, black ○ ● ●

External grille:

white, beige, light gray, gray, red ○ ● ● ● ●



NORD ROOFS

e-mail: info@nordroofs.ie

tel .: +353 01 484 5199

**NORD
ROOFS**