

## Nr. 10

TECHNICAL DATA SHEET 06.2016

### W400

Glass fibre based Shed Felt or Cap Sheet in Pour and Roll systems



#### Introduction

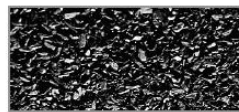
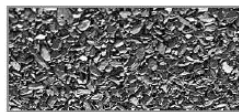
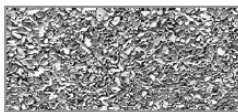
W400 mineral membranes are economical, glass fibre based waterproofing materials designed for use in traditional pour and roll multi-layer systems or as single layer on shed roofs.

#### Product Description

W400 is a glass fibre based, slate covered Cap sheet, saturated and coated with oxidised bitumen. The membrane carrier is a glass reinforcement, giving the material good dimensional stability. The upper layer is coated with slate protecting material from ultraviolet exposure and lower layer is finished with fine grained sand.

#### Product Features

- Good low temperature flexibility at -5°C
- Traditionally applied economical materials
- Nail fixing, cold or hot mastic/bitumen application
- Range of 5 mineral colours



#### Application

W400 materials are generally used to cover sheds, garages and other garden building with overlaps fixed by nailing or glued over with mastic. When applied by traditional W400 should be installed in accordance with BS 8217: 2005 Code of Practice for Reinforced bitumen membranes for roofing, constantly observing TechnoNICOL installation recommendations and guidance. W400 membranes are applied on to previously installed base layer/underlay, clear of any debris or sharp projections.

Hot bitumen should be poured and spread in front of the roll ensuring a continuous coating for the full width. The Side and end laps must be maintained at minimum of 80 mm. The cap sheet should be offset 300 mm from the underlay to avoid side build up.

## Nr. 10

TECHNICAL DATA SHEET 06.2016

### Harmonised standard

EN 13707:2004 + A2:2009

### Health and Safety

Health and Safety should be observed at all times in accordance with HSE and Industry guidance. Specific Risk Assessments and Method Statements should be produced by contractors where necessary to ensure Working at Heights, Fire Safety and Manual Handling rules are compliant with current law and regulations. Health and safety data sheets are available for all materials on request from TechnoNICOL Technical Service Department.

### Availability

Product Name	Product Code	Roll Dimensions (m)	Weight (kg/m <sup>2</sup> )
W400	456870	10 x 1	2.8 ± 0.2
W400 NEW	536924	10 x 1	2.8 ± 0.2
W400 Light	497244	10 x 1	2.4 ± 0.2
W400 Light NEW	536927	10 x 1	2.4 ± 0.2

### Performance and Key Properties

Properties	Test Method	Declared Performance			
		W400	W400 Light	W400 NEW	W400 Light NEW
Reinforcement type and weight		Glass Fibre, 90 g/m <sup>2</sup>			
Maximum tensile force L/T, N/50mm	EN 12311-1	400/400±100			
Elongation, %	EN 12311-1	2.2/2.2±0.2	4/4±2	2.2/2.2±0.2	4/4±2
Resistance to tearing (nail shank), N	EN 12310-1	110/110±20	120/120±20	110/110±20	120/120±20
Flow resistance at elevated temp. °C	EN 1110	≥ 70	≥ 80	≥ 80	≥ 80
Flexibility at low temp. °C	EN 1109	≤ 5	≤ 0	≤ -5	≤ -5
Watertightness, kPa	EN 1928	10	10	10	10
Water vapour transmission properties	EN 1931	μ=20 000	μ=20 000	μ=20 000	μ=20 000
Reaction to fire	EN 13501-5	Class E	Class E	Class E	Class E

### Quality Assurance

W400 materials are manufactured following ISO 9001: 2008 Quality Management System and Environmental Management System approved to ISO 14001: 2004.

### Technical Service and Other Products

Specialist advice and information on other compatible products is available on [www.tn-europe.com](http://www.tn-europe.com)