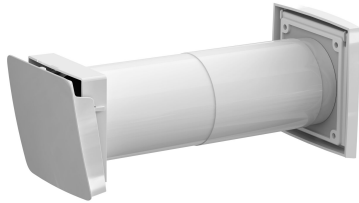




## WIVE 100 INTAKE VENT + TERM



Model	WIVETherm
Color	White   RR20
Product number	380000
LVI Code	8832052
EAN Code	6410453800005
Weight	Gross: 1.156kg, Net: 0.906kg

Description: The VILPE Wive intake vent brings in fresh outdoor air. The intake vent can be painted or wallpapered. The product fits buildings with passive ventilation. Wive intake vent can be installed on a wall or retrofitted to replace an old vent. The intake vent with thermostat is completely open when the outdoor air temperature is +20 °C. The intake vent thermostat closes in outdoor temperatures of -5 °C. However, it always allows some air to flow into a building. Includes three through-the-wall extension pipes, maximum length 440 mm. The intake vent's cover is insulated to prevent condensation.

Dimensions: Intake vent 100 x 100 mm. Multifunction grille 150 x 150 mm.

Content: Intake vent, filter, VILPE Multifunction grille and instruction manuals.

---

### Vilpe Oy Ab

Kauppatie 9, FI-65610 Mustasaari  
Telephone +358 20 123 3200

19.11.2021

Sales & Technical Support | FI +358 20 123 3233 | EN +358 20 123 3222 | RU +358 20 123 3290 | SE +46 70 511 2020 | PL +48 71 740 2623  
myynti@sktuote.fi | sales@sktuote.fi

FI: Pidätämme oikeuden muutoksiin ilman ennakoilmoitusta.  
SE: Vi reserverar oss för eventuella ändringar och fel i produktinformationen.  
EN: We reserve the right to change these terms and conditions at any time.

RU: Мы оставляем за собой право на внесение изменений без предварительного уведомления.  
PL: Zachowujemy prawo do zmian bez wcześniejszej informacji.  
DE: Technische Änderungen behalten wir uns ohne vorherige Ankündigung vor.



## WIVE 100 INTAKE VENT + TERM

### DESCRIPTION

VILPE Wive intake vent brings fresh outdoor air into the building. The vent is designed to prevent uncomfortable draft as the air flow is directed upwards, where the fresh air mixes with the warm indoor air. This will keep the room temperature at an ideal level without the sense of draft.

VILPE Wive intake vent is suitable for both new buildings and renovation projects. It can be used in detached houses, multi-apartment houses and row houses. The intake vent is installed on a wall. The VILPE Wive vent can also replace an old air intake vent. Installing VILPE Wive is quick and easy as no coupling or wiring is necessary.

The intake vent can be purchased with or without a thermostat. The vent can be completely closed, for instance in case of a fire in the area. The VILPE Wive intake vent with thermostat is only used in buildings with passive ventilation. The thermostat adjusts automatically to the outdoor temperature, meaning that when it is colder outside the vent lets in less air. The VILPE Wive intake vent without thermostat suits buildings with mechanical ventilation.

The visual look of the white air intake vent is easily modified. If one wishes, the product can be wallpapered or painted to fit the interior of the room. The insulation material of VILPE Wive prevents problems with condensation.

The high-quality filter of VILPE WIVE effectively prevents contaminants like dust and pollen from entering the building. Changing the filter is quick and easy as no screwing is necessary. Other maintenance is not required. Silencer can be purchased separately.

---

### Vilpe Oy Ab

Kauppatie 9, FI-65610 Mustasaari  
Telephone +358 20 123 3200

19.11.2021

Sales & Technical Support | FI +358 20 123 3233 | EN +358 20 123 3222 | RU +358 20 123 3290 | SE +46 70 511 2020 | PL +48 71 740 2623  
myynti@sktuote.fi | sales@sktuote.fi

FI: Pidätämme oikeuden muutoksiin ilman ennakkoihoitusta.  
SE: Vi reserverar oss för eventuella ändringar och fel i produktinformationen.  
EN: We reserve the right to change these terms and conditions at any time.

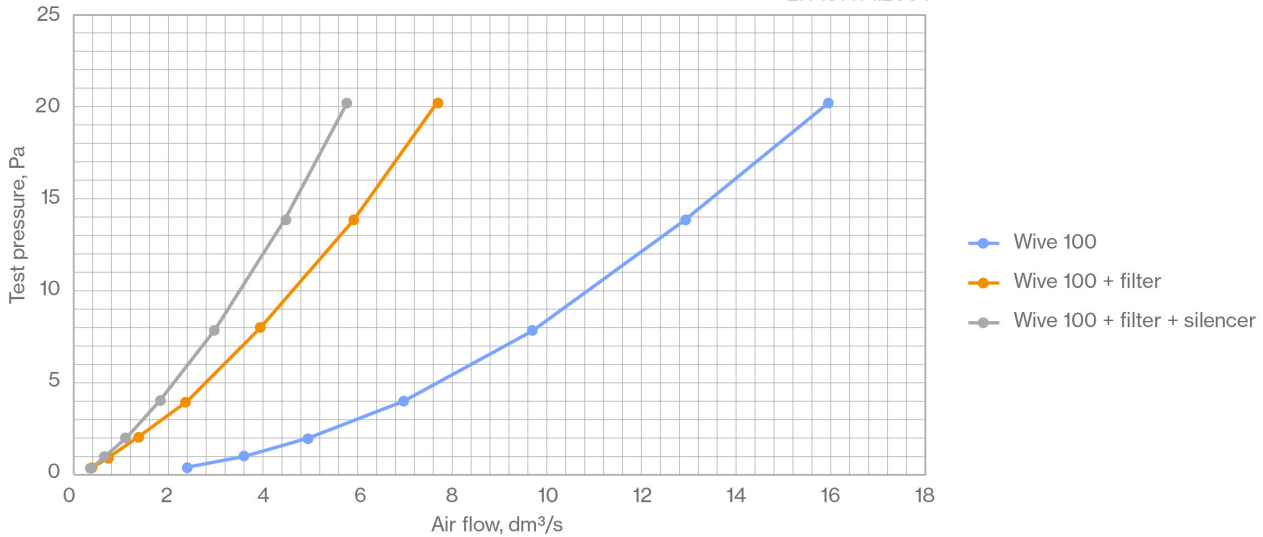
RU: Мы оставляем за собой право на внесение изменений без предварительного уведомления.  
PL: Zachowujemy prawo do zmian bez wcześniejszej informacji.  
DE: Technische Änderungen behalten wir uns ohne vorherige Ankündigung vor.

## WIVE 100 INTAKE VENT + TERM

### Flow performance

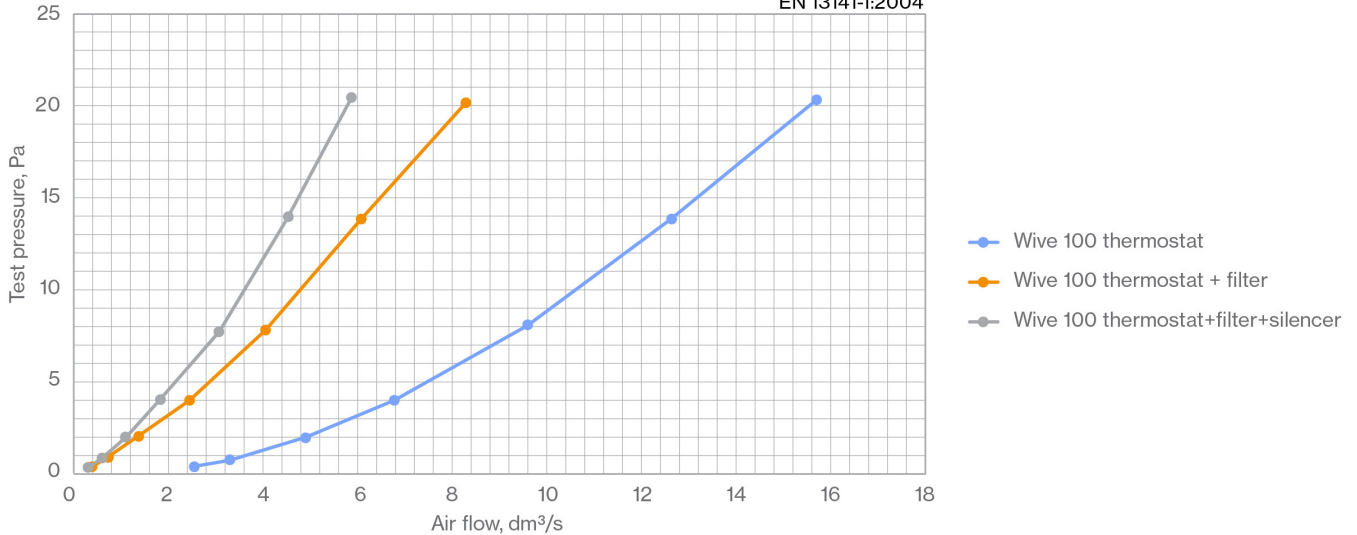
Wive 100. Lid fully open. No Multifunction grille.

EN 13141-1:2004



Wive 100 with thermostat. Lid fully open. No Multifunction grille.

EN 13141-1:2004



### Viilpe Oy Ab

Kauppatie 9, FI-65610 Mustasaari  
Telephone +358 20 123 3200

19.11.2021

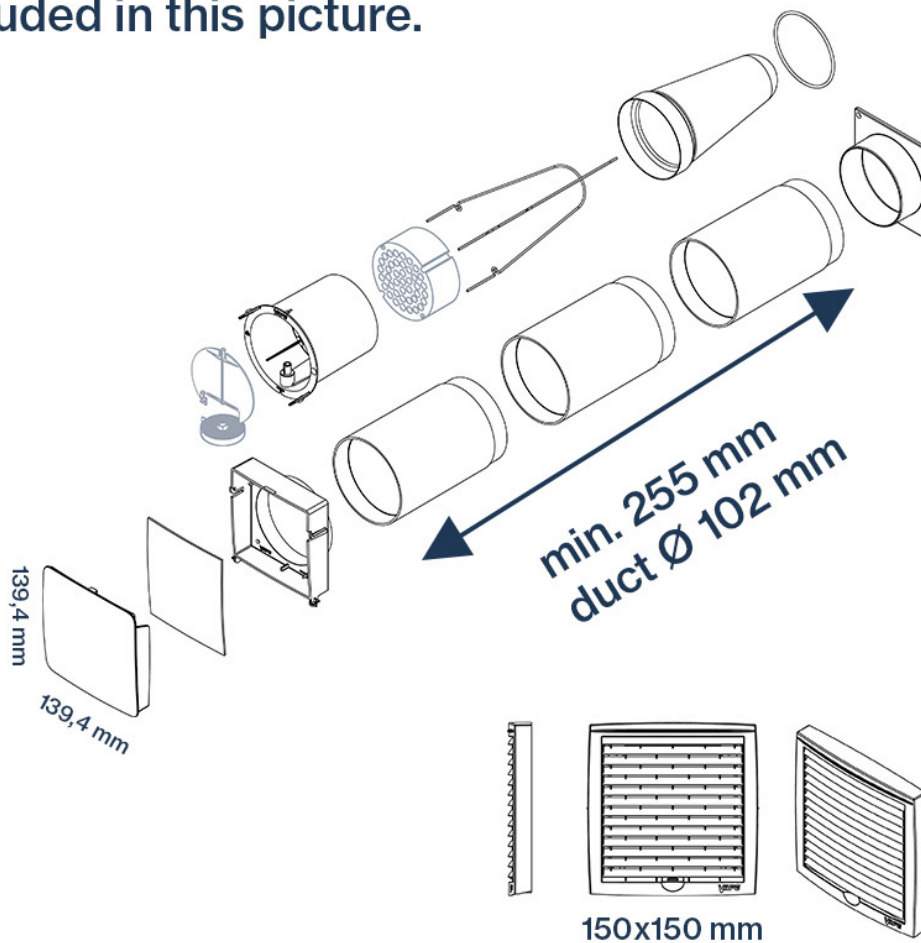
Sales & Technical Support | FI +358 20 123 3233 | EN +358 20 123 3222 | RU +358 20 123 3290 | SE +46 70 511 2020 | PL +48 71 740 2623  
myynti@sktuote.fi | sales@sktuote.fi

FI: Pidätämme oikeuden muutoksiin ilman ennakkoilmoitusta.  
SE: Vi reserverar oss för eventuella ändringar och fel i produktinformationen.  
EN: We reserve the right to change these terms and conditions at any time.

RU: Мы оставляем за собой право на внесение изменений без предварительного уведомления.  
PL: Zachowujemy prawo do zmian bez wcześniejszej informacji.  
DE: Technische Änderungen behalten wir uns ohne vorherige Ankündigung vor.

## WIVE 100 INTAKE VENT + TERM

VILPE Wive 100  
Silencer and thermostat are  
included in this picture.



### Vilpe Oy Ab

Kauppatie 9, FI-65610 Mustasaari  
Telephone +358 20 123 3200

Sales & Technical Support | FI +358 20 123 3233 | EN +358 20 123 3222 | RU +358 20 123 3290 | SE +46 70 511 2020 | PL +48 71 740 2623  
myynti@sktuote.fi | sales@sktuote.fi

19.11.2021

## WIVE 100 INTAKE VENT + TERM



### Vilpe Oy Ab

Kauppatie 9, FI-65610 Mustasaari  
Telephone +358 20 123 3200

Sales & Technical Support | FI +358 20 123 3233 | EN +358 20 123 3222 | RU +358 20 123 3290 | SE +46 70 511 2020 | PL +48 71 740 2623  
myynti@sktuote.fi | sales@sktuote.fi

FI: Pidätämme oikeuden muutoksiin ilman ennakoilmoitusta.  
SE: Vi reserverar oss för eventuella ändringar och fel i produktinformationen.  
EN: We reserve the right to change these terms and conditions at any time.

RU: Мы оставляем за собой право на внесение изменений без предварительного уведомления.  
PL: Zachowujemy prawo do zmian bez wcześniejszej informacji.  
DE: Technische Änderungen behalten wir uns ohne vorherige Ankündigung vor.

19.11.2021

## WIVE 100 INTAKE VENT + TERM



### Vilpe Oy Ab

Kauppatie 9, FI-65610 Mustasaari  
Telephone +358 20 123 3200

19.11.2021

Sales & Technical Support | FI +358 20 123 3233 | EN +358 20 123 3222 | RU +358 20 123 3290 | SE +46 70 511 2020 | PL +48 71 740 2623  
myynti@sktuote.fi | sales@sktuote.fi

FI: Pidätämme oikeuden muutoksiin ilman ennakkoilmoitusta.  
SE: Vi reserverar oss för eventuella ändringar och fel i produktinformationen.  
EN: We reserve the right to change these terms and conditions at any time.

RU: Мы оставляем за собой право на внесение изменений без предварительного уведомления.  
PL: Zachowujemy prawo do zmian bez wcześniejszej informacji.  
DE: Technische Änderungen behalten wir uns ohne vorherige Ankündigung vor.

## WIVE 100 INTAKE VENT + TERM



---

### Vilpe Oy Ab

Kauppatie 9, FI-65610 Mustasaari  
Telephone +358 20 123 3200

19.11.2021

Sales & Technical Support | FI +358 20 123 3233 | EN +358 20 123 3222 | RU +358 20 123 3290 | SE +46 70 511 2020 | PL +48 71 740 2623  
myynti@sktuote.fi | sales@sktuote.fi

FI: Pidätämme oikeuden muutoksiin ilman ennakkoilmoitusta.  
SE: Vi reserverar oss för eventuella ändringar och fel i produktinformationen.  
EN: We reserve the right to change these terms and conditions at any time.

RU: Мы оставляем за собой право на внесение изменений без предварительного уведомления.  
PL: Zachowujemy prawo do zmian bez wcześniejszej informacji.  
DE: Technische Änderungen behalten wir uns ohne vorherige Ankündigung vor.